

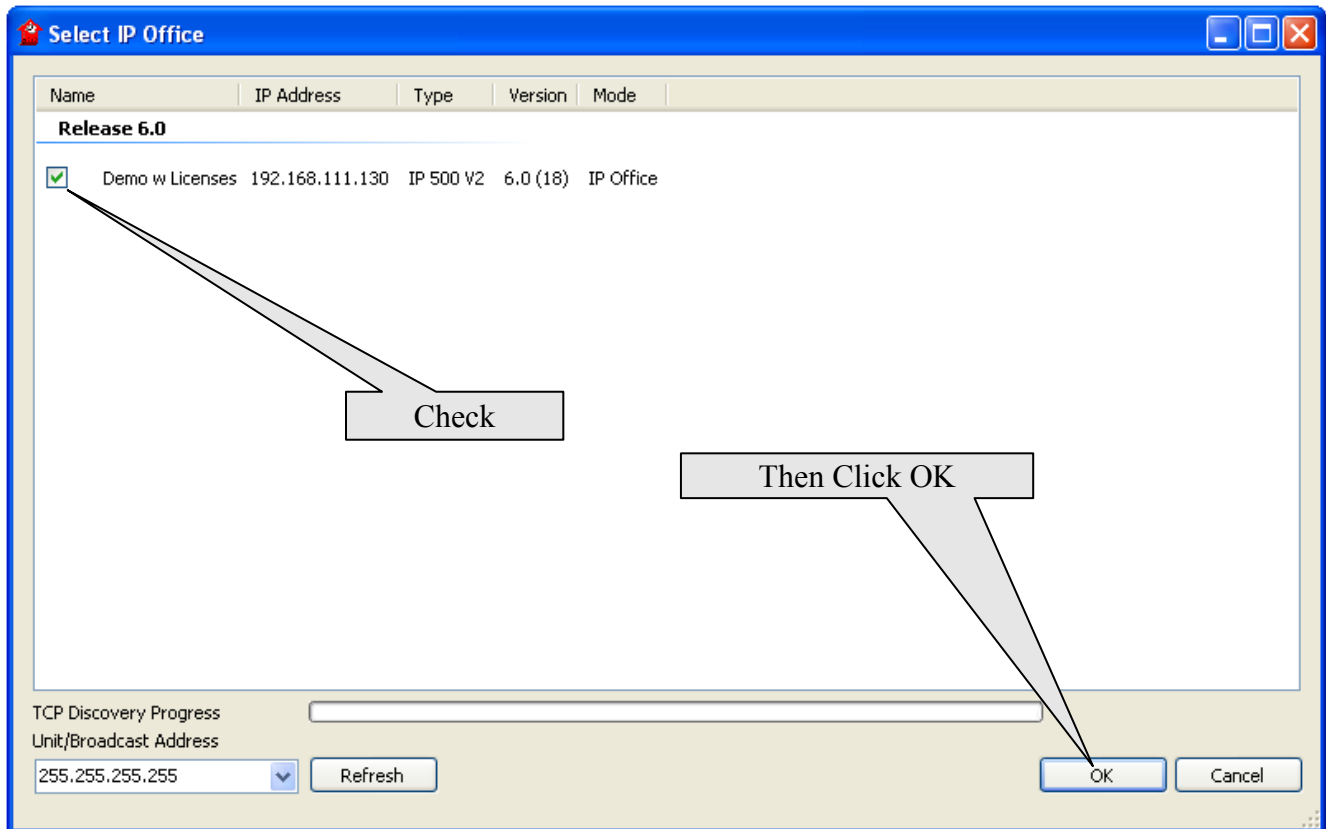
1

IP Office Essential Edition

How to Change the Password

Open the Manager program

Locate and connect to the Ksu



2

IP Office Essential Edition How to Change the Password

Log on to the KSU as would normally do so

The screenshot shows a Windows-style application window titled "Select IP Office". Inside, there is a table with columns: Name, IP Address, Type, Version, and Mode. The table has a section for "Release 6.0" with one entry: "Demo w Licenses" at IP 192.168.111.130, Type "IP 500 V2", Version "6.0 (18)", and Mode "IP Office". A "Configuration Service User Login" dialog box is overlaid on top. This dialog box contains the following fields and buttons:

- IP Office : Demo w Licenses - IP 500 V2
- Service User Name: Administrator
- Service User Password: (masked with dots)
- Buttons: OK, Cancel, Help

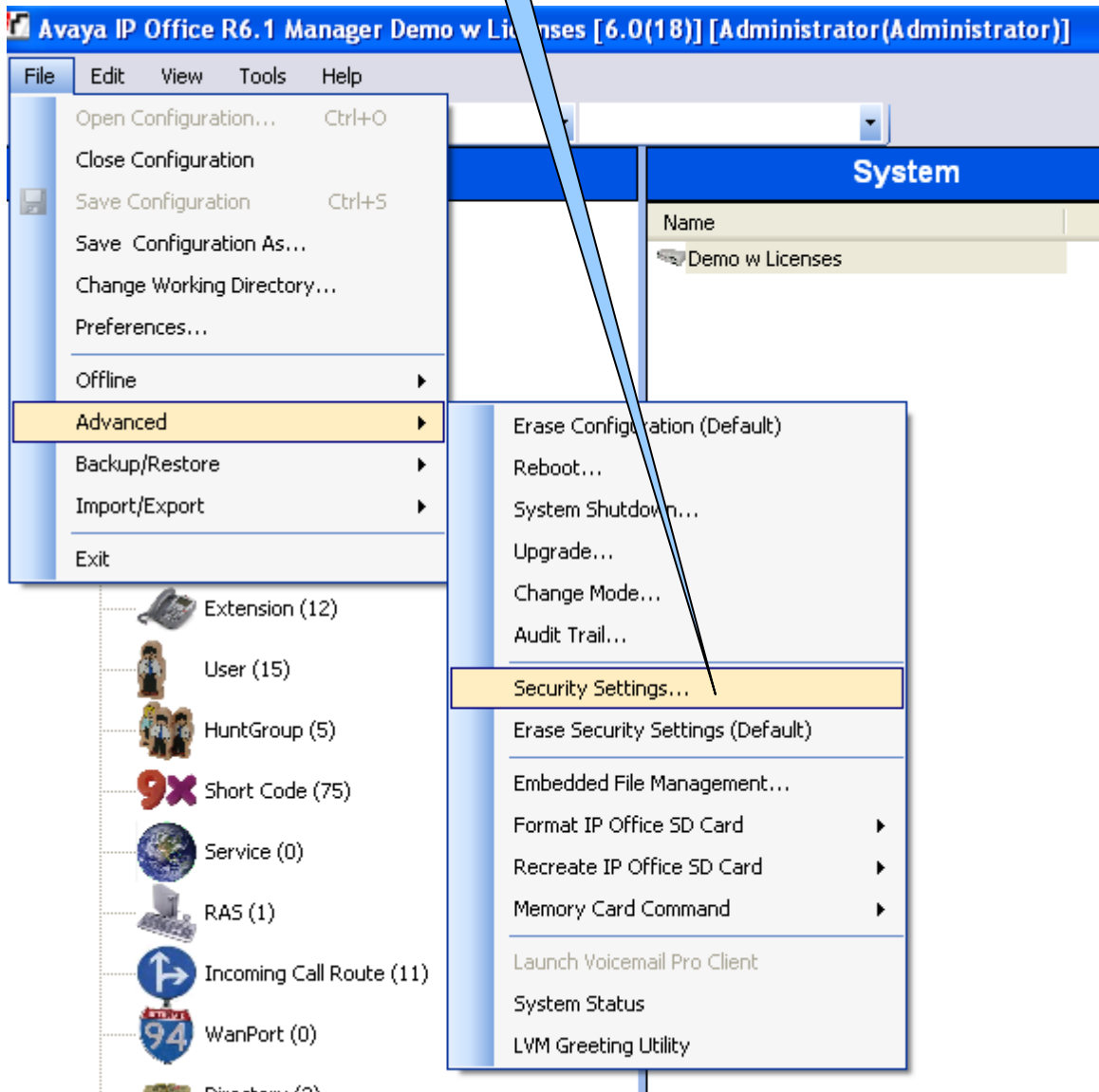
At the bottom of the main window, there is a "TCP Discovery Progress" bar, a "Unit/Broadcast Address" dropdown menu set to "255.255.255.255", a "Refresh" button, and "OK" and "Cancel" buttons.

3

IP Office Essential Edition

How to Change the Password

After you have logged on to the Ksu, Go here...

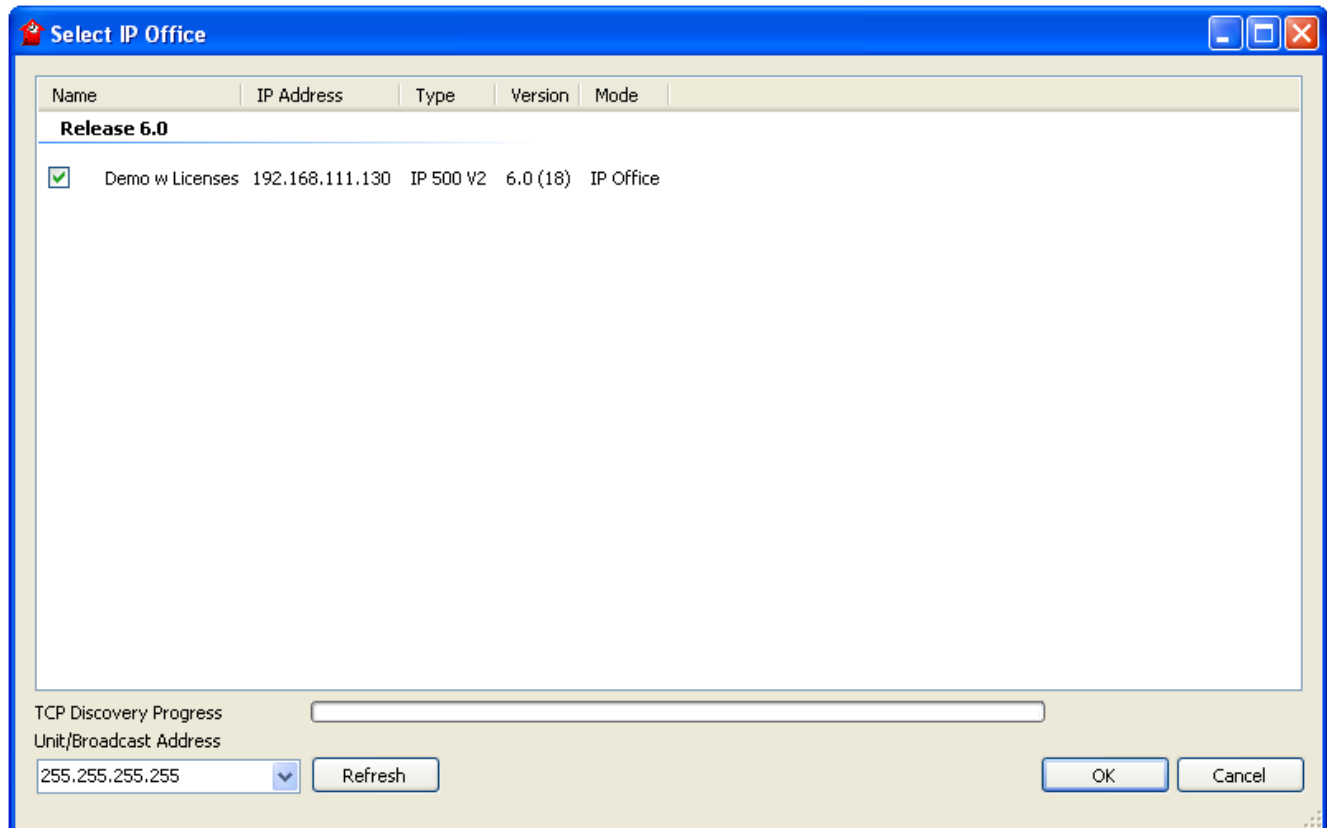


4

IP Office Essential Edition

How to Change the Password

Reconnect to the KSU

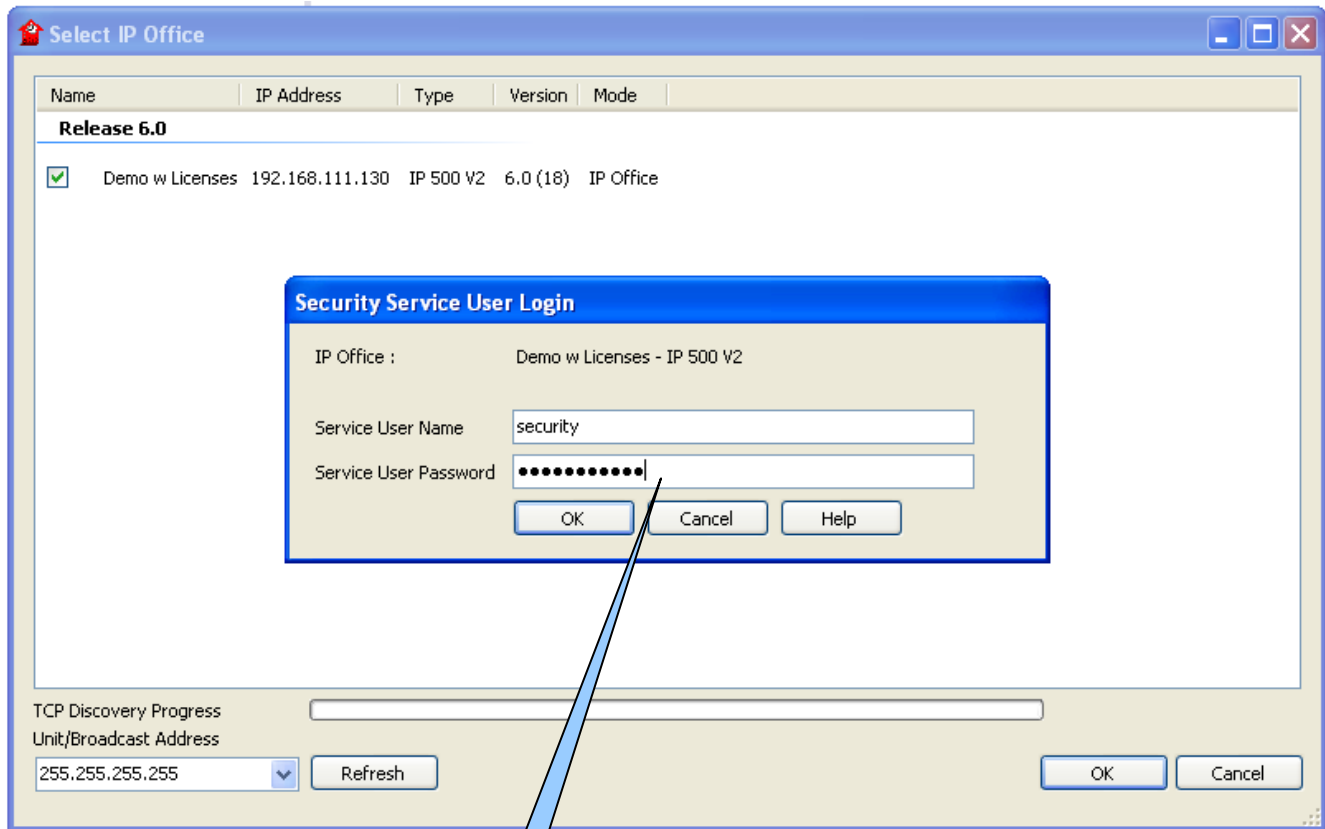


5

IP Office Essential Edition

How to Change the Password

Log into the KSU with security User and Password



Service User Name is security (Note: all lowercase letters)

Service User Password is securitypwd (Note: all lowercase letters)

IP Office Essential Edition How to Change the Password

Click on Service Users



Be sure Administrator is selected

Service Users (4)		
Service User Name	Account St...	Groups
Administrator	Enabled	Administ...
Manager	Enabled	Manage...
Operator	Enabled	Operato...
EnhTcpaService	Enabled	TCPA G...

Click on the Change Button

Service User: Administrator

Service User Details

Name: Administrator

Password:

Account Status: Enabled

Account Expiry: <None>

Enter and Re-Enter the New Password

Change Password

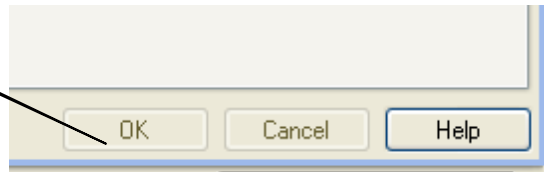
Change Password

New Password:

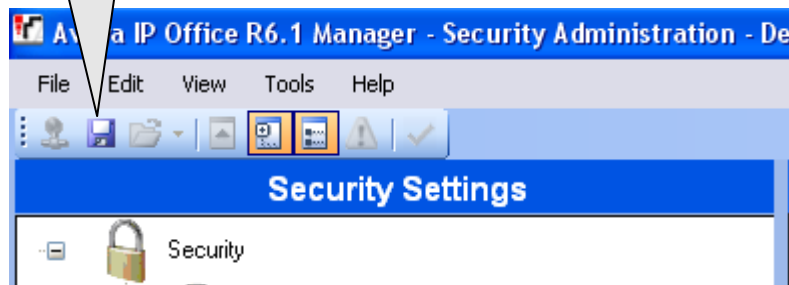
Re-Enter New Password:

IP Office Essential Edition How to Change the Password

Click **OK** in the lower Right hand corner of the screen



Click the **Blue Floppy Disk Icon** to Save the new Security Settings



security

securitypwd to finish

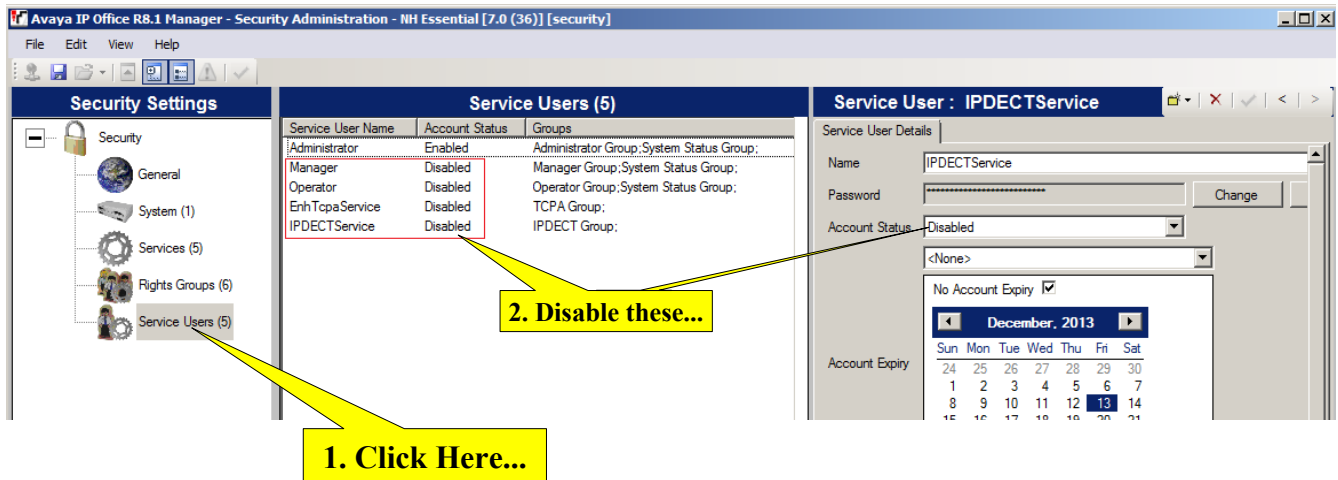
Close down the Security page.

Reconnect to your KSU using the new password.

Special Notice

A security threat has been discovered that can expose SIP Accounts and Passwords.

Disable the accounts below or change each accounts password.



Avaya IP Office R8.1 Manager - Security Administration - NH Essential [7.0 (36)] [security]

File Edit View Help

Security Settings

- Security
- General
- System (1)
- Services (5)
- Rights Groups (6)
- Service Users (5)

Service Users (5)

Service User Name	Account Status	Groups
Administrator	Enabled	Administrator Group;System Status Group;
Manager	Disabled	Manager Group;System Status Group;
Operator	Disabled	Operator Group;System Status Group;
EnhTtpaService	Disabled	TCPA Group;
IPDECTService	Disabled	IPDECT Group;

Service User : IPDECTService

Service User Details

Name: IPDECTService

Password: [Redacted] Change

Account Status: Disabled

<None>

No Account Expiry ☒

December, 2013

Account Expiry

Sun	Mon	Tue	Wed	Thu	Fri	Sat
24	25	26	27	28	29	30
1	2	3	4	5	6	7
8	9	10	11	12	13	14
15	16	17	18	19	20	21

1. Click Here...

2. Disable these...